

WhatsUp® Gold Premium Edition

Network Availability and Performance Monitoring

PREMIUM EDITION FEATURES

- › Discovery
- › Availability & Status
- › Performance Monitoring
- › Alerting
- › Reporting
- › Inventory
- › Advanced Monitoring (WMI, SSH, HTTPS)
- › Wireless Monitoring
- › Cloud Monitoring
- › Storage Monitoring
- › REST API

WhatsUp® Gold Premium Edition provides complete visibility to the status and performance of network devices and servers in the cloud or on-premises.

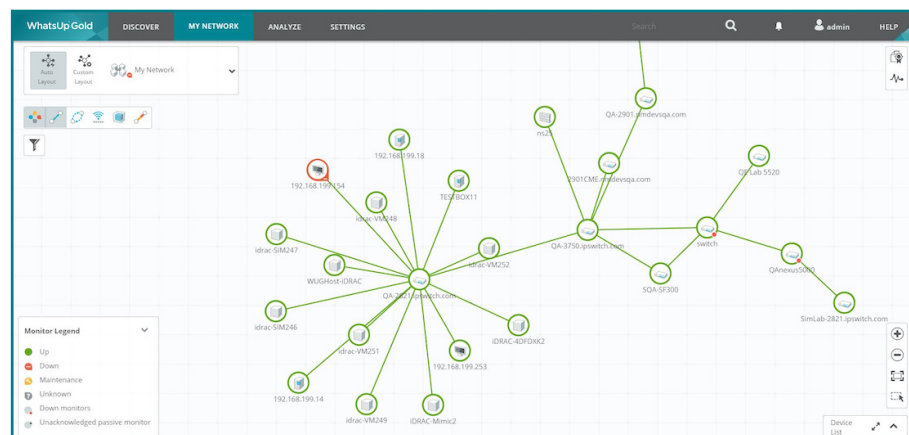
Your IT team gets the control, insight and automated resolution needed to:

- › Find and fix problems before your users are impacted
- › Automate discovery, mapping, monitoring and alerting, inventory and reporting
- › Monitor wired and wireless devices and cloud resources.

Automated Discovery & Mapping

WhatsUp Gold Layer 2/3 Discovery identifies all of the devices on your network including your routers, switches, servers, access points and more. WhatsUp Gold features Seed Scan technology which discovers all devices on the network by automatically learning your network topology. It can also discover the network using an IP Range Scan, from a Start and End IP Address and discovers all port-to-port connectivity and network dependencies.

WhatsUp Gold automatically generates Layer 2/3 network maps of your core infrastructure, Windows® infrastructure, wireless infrastructure, cloud resources and more. It monitors wireless LAN (including the Meraki Wireless Cloud) Controllers, Access Points, servers, storage devices, printers and more. The unique interactive network map displays your entire IT environment from end-to-end, quickly showing the status of every device and letting you see your end-to-end network health at a glance. Network administrators can click on any device to instantly display its status, properties and assigned monitors, or they can drill-down to dashboards displaying detailed performance data.



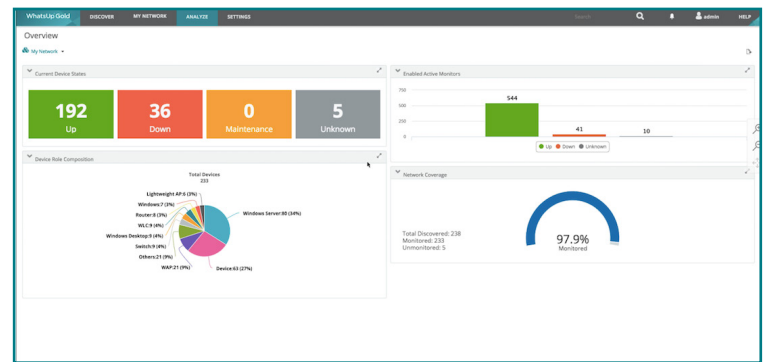
WhatsUp Gold Interactive Map

Manage & Monitor Your Infrastructure

WhatsUp Gold continuously monitors the availability and performance of your infrastructure from routers, switches, and firewalls through to your servers and storage devices. In short, WhatsUp Gold can monitor anything with an IP address that can be accessed with standard monitoring protocols including ICMP, SNMP, WMI and SSH.

Manage & Monitor Your Cloud Resources

WhatsUp Gold automatically discovers, maps and monitors cloud environments including Amazon Web Services and Azure servers. You can monitor, report and alert on the status and performance of every metric your cloud service collects via its own native API. Not only does this allow you to track cloud resource usage, it also allows you to track cloud billing and show this report on a simple dashboard. As with all WhatsUp Gold data, this can be stored for years in order to track long-term trends - something impossible with the 60 or 90-day metrics most cloud providers support. This extends WhatsUp Gold's proven network monitoring functionality to the hybrid cloud and beyond the premises to ensure consistent traffic across all systems.



WhatsUp Gold Dashboards

Smart Alerting & Actions

WhatsUp Gold provides real-time alerts via email, text, Slack and logging. Alerts empower you to proactively respond to problems before they impact users, applications and the business. WhatsUp Gold issues an alert when a device or monitor changes state (e.g., from an up state to a down state) or when a performance threshold is exceeded – for example, when memory utilization exceeds 75 percent. WhatsUp Gold's "smart" alerting uses the network dependencies automatically identified in the discovery process to eliminate alert storms and quickly identify the root causes of network problems. The WhatsUp Gold Alert Center displays threshold-based alerts in a single dashboard.

You can create action policies for alerts including event logging, notifications to Slack, posts to IFTTT, email, texting, and automated self-healing actions such as restarting an application service or any other action that can be initiated by a PowerShell script.

Reporting & Inventory

WhatsUp Gold delivers an easy-to-customize reporting environment. You can select from hundreds of out-of-the-box views or easily create drag-and-drop dashboards that provide a quick assessment of overall IT health – even detailed drill-down dashboards to isolate the root causes of performance problems. These dashboards can help you quickly resolve performance problems across your organization.

Real-time Performance Monitors provide for extremely granular reporting when troubleshooting or isolating an issue. These reports can be added to any dashboard view and configured to display real time statistics for any performance monitor. With the flexibility to pause and export data these reports can significantly improve issue resolution times.

WhatsUp Gold also features integrated inventory reporting including hardware inventory, reports on installed software and updates, warranty reports, and more. These reports save both time and money and can decrease year-end IT inventory activities from weeks to minutes. The reports will also help you find under-utilized hardware resources that can be re-deployed and identify unlicensed software to avoid expensive true-up costs.

REST API

WhatsUp Gold includes a powerful REST API that makes it easy to integrate it with your own systems or scripts. An extensive suite of REST API calls let you automate your workload by extracting specific data from WhatsUp Gold or inputting information from a separate system or script. You can extract current status information for use by another system, automatically put devices into maintenance mode before making changes, add or remove devices, add monitors, and more.

For a free trial please visit: www.ipswitch.com/forms/free-trials/whatsup-gold