

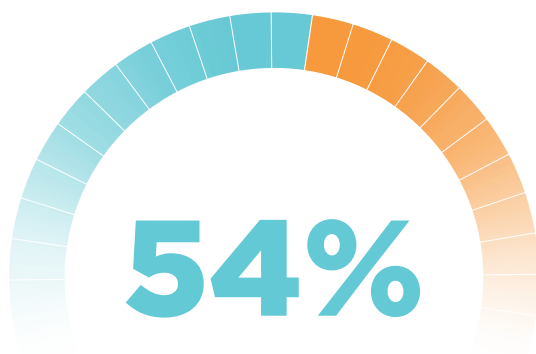
Working from Home

Flowmon is the enabler of your telecommuting policy.



In spring 2020, the world started working from home. The number of remote users tipped over from a handful to a majority basically overnight.

What some may have initially seen as a couple of short-term fixes rapidly grew into a full-scale digital transformation of the way organizations work.



OF HR LEADERS INDICATED THAT POOR TECHNOLOGY AND/OR INFRASTRUCTURE FOR REMOTE WORKING IS THE BIGGEST BARRIER TO EFFECTIVE REMOTE WORKING IN THEIR ORGANIZATION.

(GARTNER, CORONAVIRUS IN MIND: MAKE REMOTE WORK SUCCESSFUL)

One source of truth

The ability of both NetOps and SecOps teams to draw information from a shared platform enables them to coordinate decisions.

Fast time-to-value

Streamlined deployment, user enablement, predefined views, dashboards, and reports. From deployment to data on the dashboard in just 30 minutes.

Optimize spending

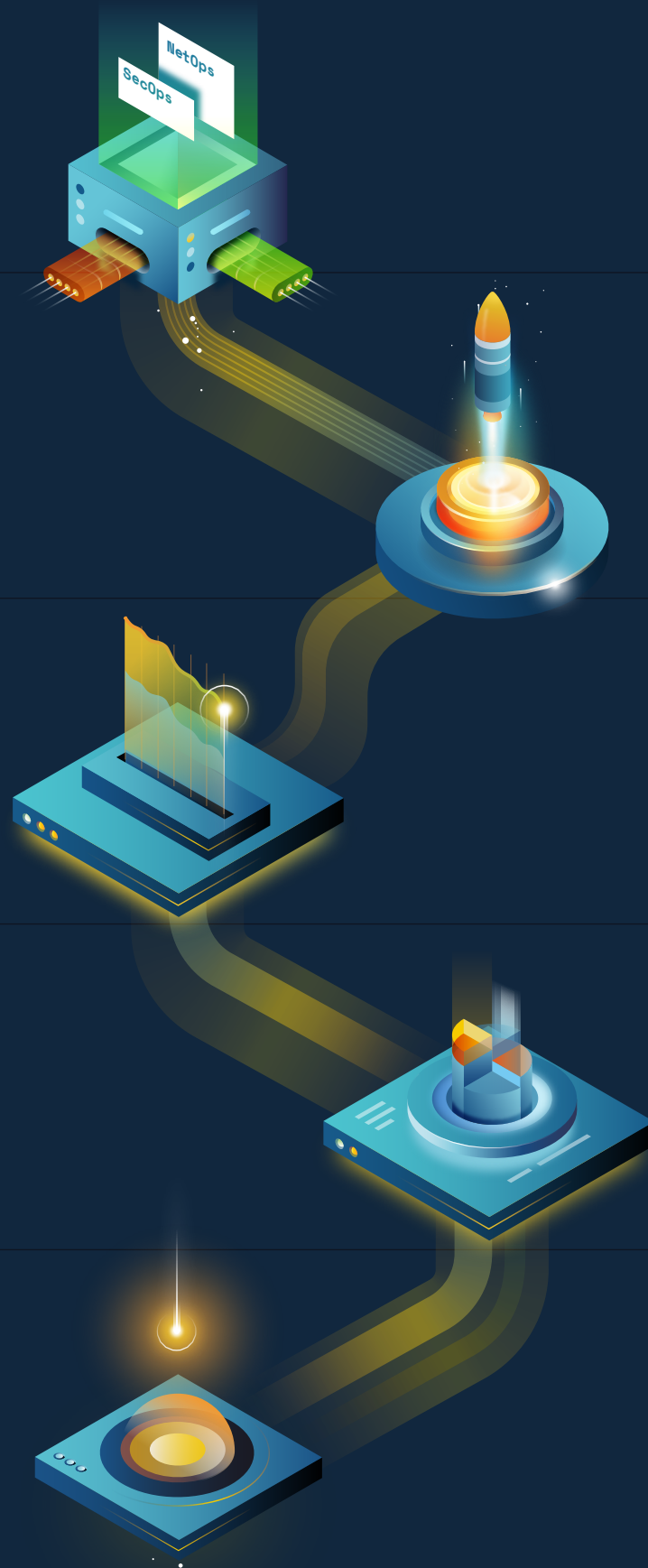
Avoid purchasing multiple technologies with overlapping functionality and improve cost-efficiency in support, staff training, and overhead.

Improve productivity

Make sure your users don't suffer errors or delays and have the proper conditions to work well.

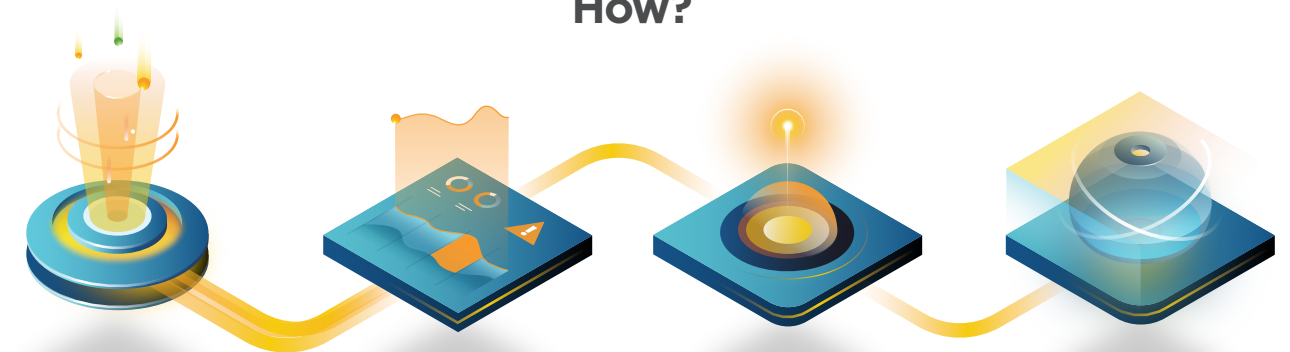
Minimize breach impact

Efficient cooperation on incident investigation and handling reduces response time and allows for early threat containment.



Flowmon provides insight into the structure of network traffic and user behavior so that you know precisely how to optimize telecommuter traffic, eliminate latency issues, and ensure users can work safely and productively.

How?



Gather

Obtain network telemetry

Record layer 3-7 transactions

Establish full network visibility

Analyze

Detect security breaches

Track network performance

Utilize AI, ML & more

Act

Go proactive, not reactive

Ascertain degradation

Block unwanted traffic

Understand

Utilize in-depth analysis engine

Identify unknown traffic

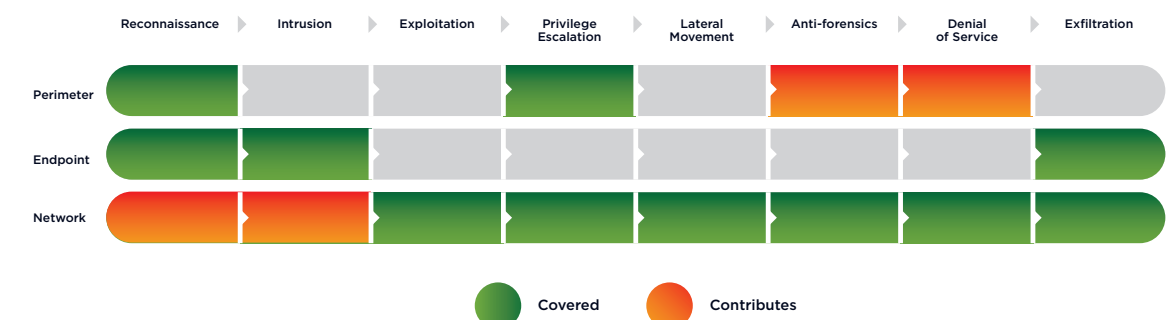
Provide network assurance

Flowmon measures network telemetry and gives you information such as the number of concurrent users, bandwidth usage, or top talkers. With this knowledge in hand, you'll know whether you need to up VPN licenses, increase bandwidth, or if you are low on hardware resources.

To help ensure the smoothness of online meetings, Flowmon features presets for the most widespread videoconferencing tools (e.g. Cisco Webex, Zoom).

Monitoring the Active Directory will tell you if access is being ensured or threatened. The solution detects and reports on anomalous behaviors, picks up Indicators of Compromise, and uses its arsenal of other methods to alert to infiltration by ransomware or other types of attack.

This approach is an absolute must-have given the increased number of personal devices where it's often impossible to enforce the company security policy.



Consolidate tools to fit the budget

Global crises go hand in hand with economic recession. For you, that means budget cuts. Thankfully, Flowmon, with its sensible price model, will not break the bank and, what is more, will integrate seamlessly with your other tools. It can even maximize your prior investments into infrastructure by using existing appliances as sources of data to use for incident response.

SUPPORTED VENDORS



“We have a responsibility to the public to keep our infrastructure functioning reliably for an indefinite length of time. Because of the pandemic, we had to quickly adapt to new circumstances and Flowmon has been integral to the transformation.”

Dott. Alessandro Riso
IT Director at Provincia di Cuneo

We cannot predict how long the pandemic will stay or how many lockdowns there may be. The fact remains businesses have to continue functioning beyond any emergency.

It only comes down to the question of preparedness and with Flowmon at your side, you'll be ready for anything.

www.flowmon.com